

# Human CD155/PVR Protein

Cat. No. CD1-HM355



## Description

<b>Source</b>	Recombinant Human CD155/PVR Protein is expressed from HEK293 with mFc (IgG1) tag at the C-Terminus. It contains Trp21-Asn343.
<b>Accession</b>	P15151-1
<b>Molecular Weight</b>	The protein has a predicted MW of 61.3 kDa. Due to glycosylation, the protein migrates to 75-100 kDa based on Bis-Tris PAGE result.
<b>Endotoxin</b>	Less than 1EU per µg by the LAL method.
<b>Purity</b>	> 95% as determined by Bis-Tris PAGE > 95% as determined by HPLC

## Formulation and Storage

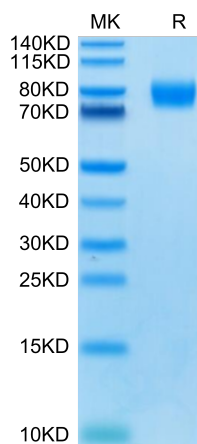
<b>Formulation</b>	Lyophilized from 0.22µm filtered solution in PBS (pH 7.4). Normally 8% trehalose is added as protectant before lyophilization.
<b>Reconstitution</b>	Centrifuge the tube before opening. Reconstituting to a concentration more than 100 µg/ml is recommended. Dissolve the lyophilized protein in distilled water.
<b>Storage</b>	-20 to -80°C for 12 months as supplied from date of receipt. -80°C for 3 months after reconstitution. Recommend to aliquot the protein into smaller quantities for optimal storage. Please minimize freeze-thaw cycles.

## Background

CD155 is a cell surface adhesion molecule functioning in tumor cell migration, invasion, and metastasis, and not surprisingly, is also designated as a common tumor-associated antigen. CD155 is also recognized by NK cells to induce their cytotoxicity. CD155 is also commonly referred to as the "poliovirus receptor," or PVR.

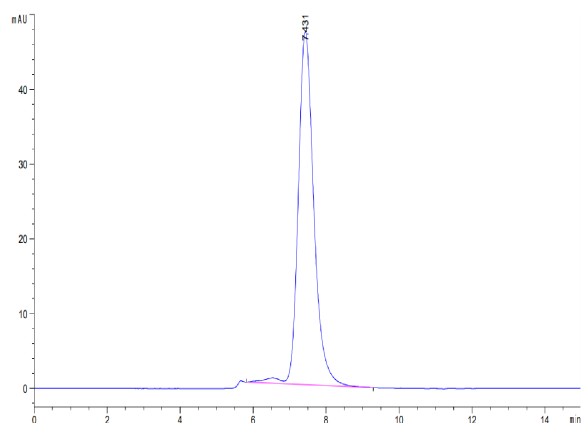
## Assay Data

### Bis-Tris PAGE



Human CD155 on Bis-Tris PAGE under reduced condition. The purity is greater than 95%.

### SEC-HPLC



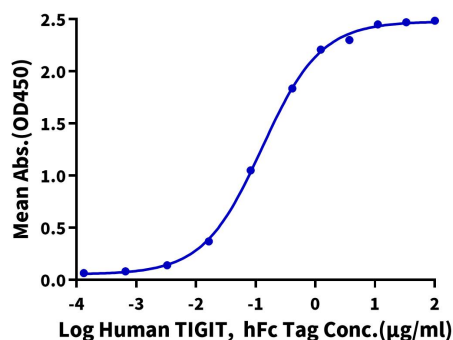
The purity of Human CD155 is greater than 95% as determined by SEC-HPLC.

Assay Data

ELISA Data

**Human CD155, mFc Tag ELISA**

0.2µg Human CD155, mFc Tag Per Well

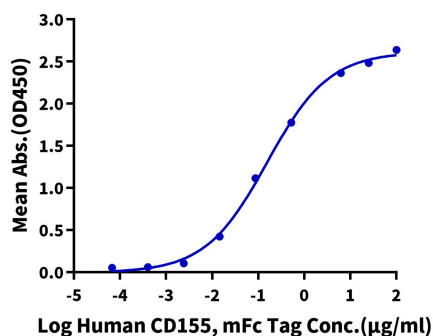


Immobilized Human CD155, mFc Tag at 2µg/ml (100µl/well) on the plate. Dose response curve for Human TIGIT, hFc Tag with the EC50 of 0.13µg/ml determined by ELISA (QC Test).

ELISA Data

**Human CD155, mFc Tag ELISA**

0.5µg Human DNAM-1, His Tag Per Well



Immobilized Human DNAM-1, His Tag at 5µg/ml (100µl/well) on the plate. Dose response curve for Human CD155, mFc Tag with the EC50 of 0.16µg/ml determined by ELISA.